



Dr. Luis J. Pazos Cópola

Licenciado en Medicina y Cirugía por la UPV
 Licenciado en Odontología (UPV)
 Formación privada en Prostodoncia Avanzada
 Práctica privada en Odontología Restauradora en Gijón
 y Mieres
 Miembro activo de varias sociedades

Colaboradora

Dra. M. Elena Plaza Macho
 Médico especialista en Anestesiología

Guided surgery with AVINENT implants

PACIENT

55 year old female.

MEDICAL HISTORY

No medical pathologies or interesting records.

REASON OF THE VISIT

Treatment with implants in edentulous areas.

PREVIOUS TREATMENT

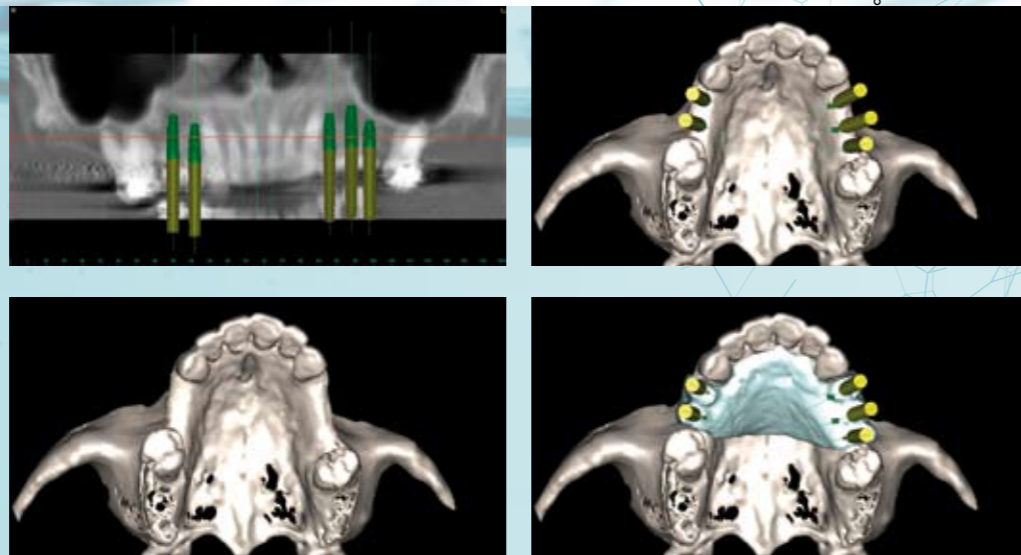
- tartar removal procedure
- oral hygiene instructions
- scaling

Note: impressions and registers making in order to prepare a radiological splint.

TREATMENT PLAN

Replacement in edentulous areas through implant placement in positions 14, 15, 24, 25 and 26 and subsequent cement-retained prosthesis. The surgery will be done with sedation.

Guided surgery with AVINENT implants



01 VIRTUAL PLANNING
Once a CT is performed, and using virtual planning software, placement of the implants at their prosthetically ideal position is performed taking into account the remaining bone.



02
Using a surgical splint, allows for a full thickness periosteal flap to be raised and the bone to be marked to record the ideal position for the implants.



03 By means of parallel pins, the angulation of the implants and the distance between the implants can be easily controlled. AVINENT implants have a self-tapping design and a cortical microthread which enables to obtain an optimum primary stability. BAS (Biomimetic Advanced Surface) surface treatment accelerates osteointegration thanks to the presence of biological elements such as calcium and phosphorous.



04
The implants are placed and left transmucosal, with the healing abutments which allow good soft tissue healing.



05
Three months after surgery, titanium abutments are fitted with a cemented retained definitive restoration.



06 Pictures of the definitive prosthesis and control radiograph.

